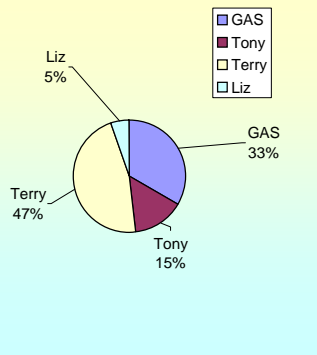


**APPRENTICESHIP TRAINING PROGRAM  
STATISTICS BY EMPLOYER - TRADES - GENDER - COORDINATOR**

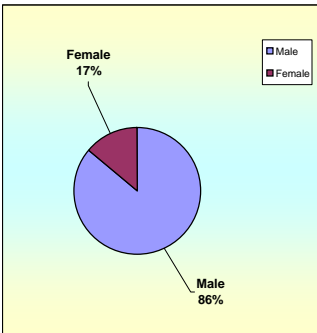
**REPORT AS OF January To March 2010**

ACTIVE EMPLOYERS	
1	3V's Graphic Design 1
2	Advance Electrical 4
3	Atkins Kroll 5
4	B.Q. Fire Sprinklers 2
5	Barrett Plumbing 6
6	Cabuhat Technical Services 1
7	Cars Plus 12
8	Dept. of Education 9
9	Dept. of Land Management 18
10	Dept. of Public Works 2
11	DOA 4
12	Duenas, Camacho & Assoc. 7
13	DZSP 21 26
14	Emergency Power Maint. 5
15	F.A.C.S Incorporated 1
16	Fiesta Resort 2
17	G.S. Villaflores 1
18	GTA TeleGuam 44
19	Guam Contractors Assoc. 25
20	Guam Police Dept. 16
21	Guam Power Authority 6
22	Guam Shipyard 12
23	Guam Waterworks 22
24	Gulf Copper 14
25	Hard Rock Café 2
26	Hawaiian Rock Products 12
27	Hilton Guam 5
28	Hotel Nikko 0
29	Hyatt Regency Guam 9
30	Infant of Prague 1
31	Ironwood Estates 1
32	J&B Modern Tech. 1
33	Judiciary of Guam 4
34	Lam Lam Tours 7
35	Micro Self-Help 3
36	NCSTAMS 1
37	Next Generation 4
38	Nissan Guam 2
39	Onward Mangilao Golf 1
40	Orion Const. 3
41	Pacific Island Club 1
42	PMT Corp. 4
43	Port Authority Guam 24
44	Prestige Automobiles 2
45	Sweet Relief (PROA) 1
46	TG Engineer 4
47	TLC Day Care 1
48	Two Lover's Point 1
49	United Tire Services 2
50	Universal Tire Supply 4
51	V.P. Olivares 5
52	W.B. Flores & Co. 4
<b>TOTAL: 354</b>	

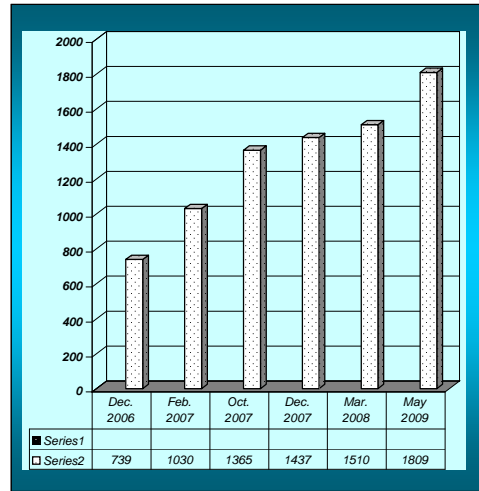
BY COORDINATOR	
GAS	118
Tony	52
Terry	165
Liz	19
<b>Total</b>	<b>354</b>



BY GENDER	
Male	305
Female	49
<b>Total</b>	<b>354</b>

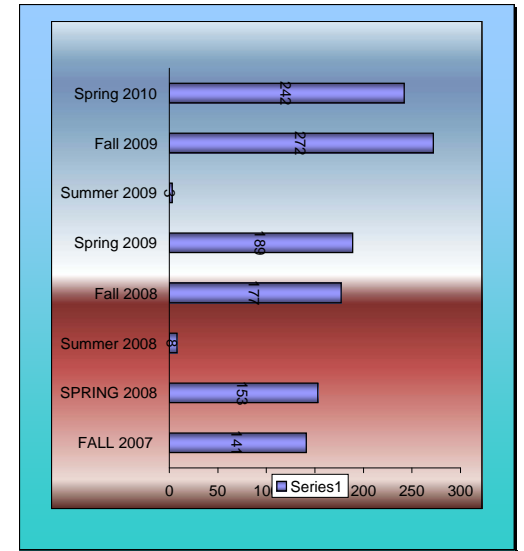


DEPARTMENT OF LABOR Alien Labor Processing Certification Division EMPLOYER'S STATISTICAL REPORT H2 Workers	
Dec. 2006	739
Feb. 2007	1030
Oct. 2007	1365
Dec. 2007	1437
Mar. 2008	1510
May 2009	1809



NEW EMPLOYERS:	
Ironwood Estates	
Ironwood Manor	
3V's Graphic Design	
Emergency Power Maintenance	
Best Sellers	
Villaflores Surveying	
Infant of Prague	
L.A. Auto Tire & Lube	
Guam Housing Authority	
Nippo Corp.	
STANDARDS IN THE WORKS	
Core Tech	
Guam International Airport Authority	

ENROLLED FOR:	FA07	SP08	SU08	FA08	SP09	SU09	FA09	SP10	FALL 2007	
3 V's Graphic								1	141	
Advance Electrical				1	2		4	2	153	SPRING 2008
Advance Management				1					177	Fall 2008
Atkins Kroll, Inc.							2	5	189	Spring 2009
B.Q. Fire Sprinkler	3	2			2			0	3	Summer 2009
Barrett Plumbing	8	8		5	4		4	6	272	Fall 2009
Black Construction	5	6		3				0	242	Spring 2010
Cabuhat Construction								1	1	
Cars Plus				5	2			5	6	
Department of Education (GPSS)								8	8	
Dept. of Public Works (DPW)		6		4	5			2	2	
DOA	6	5		5	5			4	3	
Dept. of Land Management								16	11	
Duenas, Camacho & Associates								7	6	
DZSP 21				1	12			17	20	
Emergency Power Maint.									5	
F.A.C.S Incorporated									1	1
GHRA	9	9		10	10	1	17	14		
G.S. Villaflores									1	
GTA TeleGuam				20	40			38	21	
Guam Contractor's Association									2	
Guam Police Department								20	14	
Guam Power Authority (GPA)	58	54	1	34	24			17	5	
Guam Shipyard	31	27		9	10			10	5	
Guam Waterworks Authority (GWA)		24	7	24	21	2	21	20		
Gulf Copper								10	11	
Hawaiian Rock Products	9	4		1	5			7	1	
Infant of Prague									1	
J&B Modern Tech	2	2						1	1	
Judiciary of Guam								3	4	
L.A. Tire & Lube									1	
Lam Lam Tours & Transportation				12	12			8	2	
Medler'z		1		1	1			0	0	
Micronesia Self-Help Housing								4	4	
Naval Computers & Telecomm.		1		1	1			1	1	
Next Generation								4	3	
Nissan Motors	3	3		3	2				0	
Onward Mangilao Resort	2	1		2					0	
Orion Construction								2	3	
Pacific Micronesian Tours (PMT)		2		3	3			2	1	
Port Authority Guam		21		19	17			20	14	
Prestige Automobiles	3	3		4	4			2	2	
TG Engineering								4	3	
TLC Day Care	2	1		3	1			1		
Two Lover's Point		6		4	2			0	1	
Universal Tire Supply		3			2				2	
United Tire Supply								2	2	
V.P. Olivares								5	4	
W.B. Flores & Co.				2	2			2	4	
<b>TOTAL:</b>	<b>141</b>	<b>153</b>	<b>8</b>	<b>177</b>	<b>189</b>	<b>3</b>	<b>272</b>	<b>224</b>		







APPRENTICESHIP TRAINING PROGRAM

	FALL 2007	SPRING 2008	SUMMER 2008	FALL 2008	SPRING 2009	SUMMER 2009	Fall 2009	Spring 2010	FALL 2010	Total Per Enrolled:
1 AC100 Fund of Bookkeeping	1			5				6		17
2 AC103 Accounting Principles										1
3 AC150 Federal Income Tax							1			1
4 AE103 Basic Blueprint Reading	21	10		16	11			16		74
5 AE121 Tech Engineering Drawing		19		14				14		47
6 AE150 Computer Aided Design								9		9
7 AST100 Intro To Auto Service Technology	3	10		3	4		4	4		28
8 AST110 Engine Repair				5	4					9
9 AST120 Automatic Trans	7				8			4		19
10 AST130 Manual Drive Train				5						5
11 AST140 Suspension & Steering							4			4
12 AST150 Brakes				3				5		8
13 AST160 Electrical Electronic System	4	3			5			5		17
14 AST170 Heating & A/C		3						13		16
15 AST180A Engine Performance I		5			2			5		10
16 AST180 Engine Performance II							1			1
17 AST210 Theory/Engine Repair								2		2
18 AST220 Theory/Prac Auto Tran		3								3
19 AST240 Theory/Suspension & Steering							3			3
20 AST250 Theory Brakes							4			4
21 AST260 Theory/Prac. Electrical/Electronic					5					5
22 AST280 Theory/Engine Performance								1		1
23 CD110 Early Childhood Education			2							2
24 CD140 Environmental for Young Children				1						1
25 CD180 Language Art in Early Childhood							1			1
26 CD221 Child Growth & Development	1			1				1		3
27 CD260 Social & Emotional	1							1		2
28 CD280 Physical & Language	1									1
29 CDS240 Cognitive & Deve		1								1
30 CE211 Plane Surveying I							22			22
31 CE222 Plane Surveying II								18		18
32 CJ100 Introduction to Criminal Justice							1			1
33 CJ150 Criminal Procedures								1		1
34 CJ206 Social Value & Criminal							1			1
35 CS101 Introduction To Computer Systems							11	1		12
36 CS102 Computer Operations							5			5
37 CS103 RPG II							7	5		12
38 CS104 Visual Basic Program							2	3		5
39 CS151 Windows Application	11	13					11			44
40 CS202 COBOL							4			4
41 CS203 Systems Analysis & Design							1			1
42 CS204 "C" Programming							4			4
43 CT140 Industrial Safety	8			41	19		19	18		105
44 CT152 Fundamentals Of Plumbing							19			19
45 CT153 Intro To Carpentry		14					16			30
46 CT154A Masonry Level I								14		14
47 CT162 Advance Plumbing	11									11
48 CT165A Electricity Level				13	4		12			29
49 CT165B Electricity Level I				21	9		13	7		50
50 CT165C Electricity Level II					7		1	1		9
51 CT172 Plumbing Installation		14								14
52 CT185A Refrigeration & A/C Level I					7			10		17
53 CT185B Refrigeration & A/C I							2			2
54 CT185C Refrigeration & A/C II								11		11
55 CT196A Fund of Oxyacetylene Welding				7			9			16
56 CT196B Fund of Oxyacetylene Welding					16			18		34
57 CT197B Shielded Metal Arc Welding					12			14		26
58 Diesel Technology & Preventive Maint				12						12
59 EE103 Electricity I / DC Circuits	2	9		8	9		6	4		38
60 EE104 Electricity II / Servicing Curren	4	6		5	6		7	6		34
61 EE107 Intro To Instrumentation		14		6			1			21
62 EE110 Instrumentation		4		3						7
63 EE112 Electrical Devices		6		10	2			1		19
64 EE116 Digital Technology	6						7			13
65 EE211 IT Essentials I				20			19			39
66 EE215 IT Essentials II							8	10		18
67 EE265 Computer Networking Academy							10			10
68 EE267 Computer Networking II								10		10
69 EM103 Basic Electricity I	11	13								24
70 EM104 Basic Electricity II	17	12								29
71 EM111 Electrical Wiring		14								14
72 EM112 National Electrical Code	12									12
73 EM113 Refrigeration I			13							13
74 EM114 Refrigeration II							9			9
75 EN100W Fund of English-Writing	4	1								5
76 EN110 Freshman English	2						1			3
77 EN111 English Compositor								2		2
78 HL130 First Aid & Safety							1			1
79 HL131 BLS For Health	1									1
80 HL202 Nutrition	1	1		3			4	4		13
81 HS140 Menu Planning			2				2	1		9
82 HS160 Hospitality Supervisor	4	1		1						2
83 HS203 Sanitation & Safety			3				2			9
84 HS208 Food & Beverage Services	3		1							5
85 HS222 Food & Beverage Cost Control							6			6
86 HS237 Principles of European Cuisine				6				2		8
87 HS238 Garde Manger/Cold Pantry				5			7			12
88 HS244 Baking Bread	4		5				9			18
89 HS245 Food Production Principles		7		4				2		13
90 HS247 International Cuisine							8			8
91 HS246 Buffet Service/Catering				5			7			12
92 HS248 Patisserie	1		4				7			12
93 HS249 Advanced Food Preparation							8			8
94 MA085 Fund of Mathematics			7	4			6	4		21
95 MA095 College Mathematics	12	11	2	3	10	1	5	10		54
96 MA108 Intro To College Algebra	15	21	5	10	14		5	5		75
97 MA110A Finite Math	17	1	6	5	2	11	2			44
98 MA145 Culinary Math	3		5	1			2			11
99 MA161A College Algebra/Tech Math	24	16	7	6			5	6		64
100 MA161B College Algebra/Trigonometry		10	7	4			3			24
101 ME161A Intro To Auto Body			2							2
102 ME171A Auto Collision Repair	1		4							5
103 ME171B Autobody Refinishing							1			1
104 ME193 Truck Drive Trains							18			18
105 ME194 Truck Electrical Systems							18			18
106 OA101 Keyboarding Application	10	9	1	3	23		3	10		59
107 OA103 Filing System	2		4				7			13
108 OA109 Business Math using Exce	4	7		2			5	3		21
109 OA250 Office Procedures										1
110 PY125 Interpersonal Relations		5	2	1			3	11		22
111 SI141 Applied Physics		14		8	3		2			27
112 SM208 Personnel Supervisor			2	6			2	1		11
113 SM220 Management Skills Development				2			3	5		10
114 SU100 Surveying Drafting								19		19
115 VC101 Intro To Visual Communicator								1		1
116 VC102 Design Principles & Element								1		1
117 WA210 Treatment Processes & Procedures								23		23
118 WA215 Water Distribution System								23		23
119 WE105 Fund of Oxyacetylene Welding	12	18								30
120 WE110 Fund of Arc Welding I	9									9
121 WE111 Fund of Arc Welding II		9								9
122 WE115 Metal Fabrications							17			17
123 WE228 Basic Metallurgy				12						12
124 WT100 Intro To Waterworks Technology				14						14
125 WT110 Waterworks Science							11			11
<b>Total Per Semester:</b>	<b>253</b>	<b>316</b>	<b>8</b>	<b>271</b>	<b>286</b>	<b>3</b>	<b>424</b>	<b>386</b>		<b>1947</b>

EMPLOYER:	ENROLLED
3 V's Graphic	1
Advanced Electrical	2
Atkins Kroll	5
B.O. FirePro.LLC	0
Barrett Plumbing	6
Cabuhat Construction	1
Cars Plus	6
Department of Education	8
Dept. of Administration	3
Dept. of Land Management	11
Dept. of Public Works	2
Duenas, Camacho & Assc.	6
DZSP 21	20
Emergency Power Maint.	5
F.A.C.S Incorporated	1
G.S. Villalobos	1
GHRA	14
GTA TeleGuam	21
Guam Contractor's Assoc.	2
Guam Police Dept.	14
Guam Power Authority	5
Guam Shipyard	5
Guam Waterworks Auth.	20
Gulf Copper	11
Hawaiian Rock Prod.	1
Infant of Prague	1
J&B Modern Tech.	1
Judiciary of Guam	4
L.A. Tire & Lube	1
Lam Lam Tours	2
Micronesia Self Help	4
NCSTAMS	1
Next Generation	3
Nissan Motors	0
Orion Construction	3
Perez Bros.	0
PMT Guam Corp.	1
Port Authority	14
Prestige Automobile	2
TG Engineering	3
TLC Day Care	0
Two Lover's Point	1
United Tire Supply	2
Universal Tire Supply	2
V.P. Olivares	4
W.B. Flores	4
<b>TOTAL:</b>	<b>224</b>

FALL 2007	253
SPRING 2008	316
SUMMER 2008	8
FALL 2008	271
SPRING 2009	286
Summer 2009	3
Fall 2009	424
Spring 2010	386

